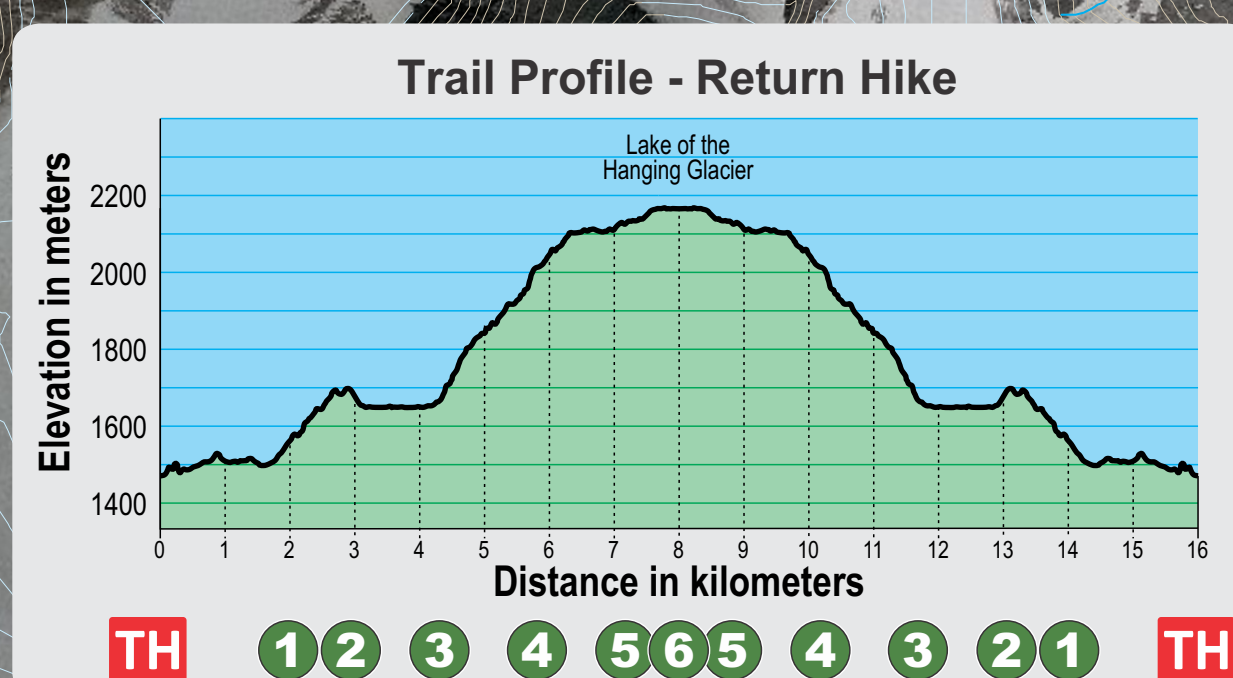




Lake of the Hanging Glacier is a popular hike to a spectacular alpine lake set among glacier-clad peaks.

Length: 8 km, one-way  
Hiking time: 2.5 to 3.5 hours, one-way  
Elevation gain: 720m



## Trail Description

**TH** From the trailhead the trail climbs up and over a short washed-out portion of the road, then rejoins the old logging road for 2 km. It narrows to a forested trail before reaching Hell Roaring Creek. The creek is crossed by a temporary footbridge, in place only from July to September. **Crossing Hell Roaring Creek unbridged is treacherous and not recommended.**

CAUTION

**2** The trail continues for 1 km then crosses Horsethief Creek via a permanent footbridge and enters a mature forest. After another 1 km the trail starts to switchback steeply alongside the cool cascades of the creek descending from the lake above.

**4** After the last switchback the trail continues on through flowered slopes and meadows to the campsite. A table, toilet and tent sites comprise a rustic trailside campsite located 700 m before the lake. The trail ends at the north shore of the lake. Please do not camp or light fires along the lakeshore.

The glacier feeding the lake is approximately 2.5 km south. Do not attempt to travel on any glacier without experience and proper equipment.

Please stay on the trail. Short-cutting damages vegetation and causes erosion. Pack out your garbage. Take only pictures, leave only footprints. Do not disturb wildlife.

This trail is maintained by the Summit Trail Makers Society in partnership with Recreation Sites and Trails BC. For more information visit: [summittrailmakers.ca](http://summittrailmakers.ca) [sitesandtrailsbc.ca](http://sitesandtrailsbc.ca)



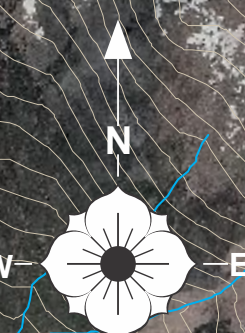
Avoid surprising bears  
Travel in groups  
Carry bear spray

Please report all forest fires.  
Phone toll-free: 1 800 663 5555

IN CASE OF EMERGENCY CALL  
911

## MAP LEGEND

- TH** TRAILHEAD
- P** PARKING
- A** TENT SITE
- ROAD
- TRAIL
- FOOT BRIDGE



0 0.5 1 1.5 2  
Scale in Kilometres



YOU ARE HERE

TH  
P

Radium  
Hot Springs  
50 km

50° 29' 35" N

Granite  
Peak  
3117 m

Glacier  
Dome  
3021 m

Lake  
of the  
Hanging  
Glacier

Mount  
Maye  
3273 m

The  
Lieutenants  
3272 m

Commander  
Mountain  
3371 m

West  
Guardsmen  
3259 m

Center  
Guardsmen  
3357 m

East  
Guardsmen  
3210 m

The  
Cleaver  
3287 m

Cascades roar down  
the creek beside the  
forested switchbacks.

Photo credit:  
John Pitcher

Lake of the Hanging Glacier.  
Spring ice breakup mixed with ice floes  
that have calved off the glacier.

Photo credit:  
Joe Lucas